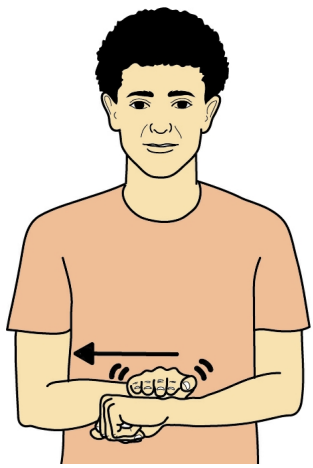
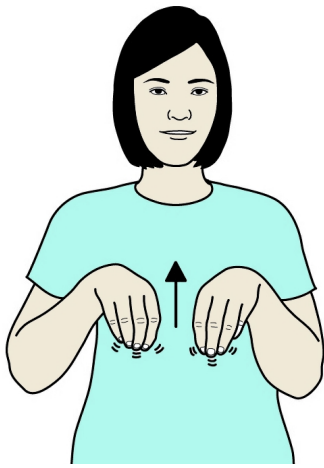


BEACH



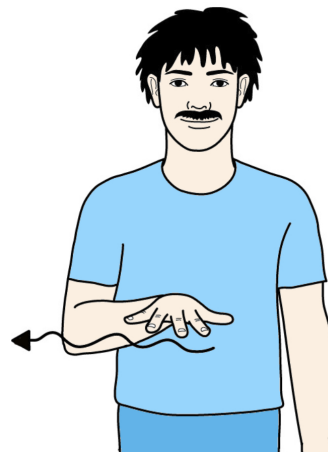
Supporting closed hand (palm down, pointing in); working flat hand (palm down, pointing forward) moves out along supporting forearm with wavy motion.

SAND



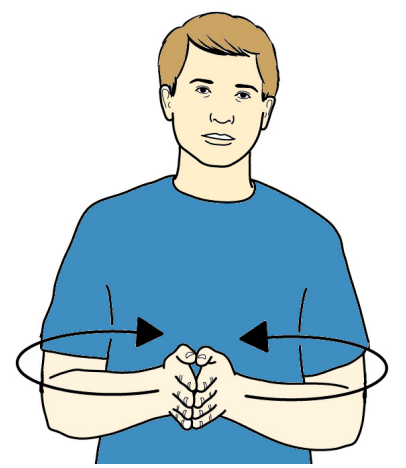
Bunched hands (palms back, pointing down) move up as thumbs and fingertips rub together.

SEA



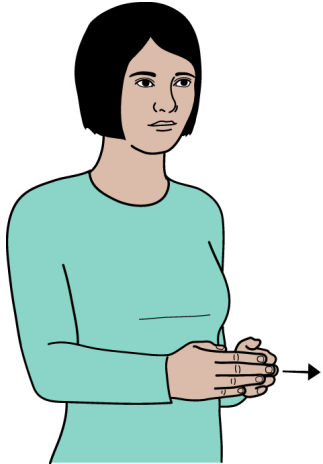
Working open hand (palm down, pointing forward), arm moves out in smooth wavy movement.

SWIMMING



Flat hands (palms together, pointing forward) circle out.

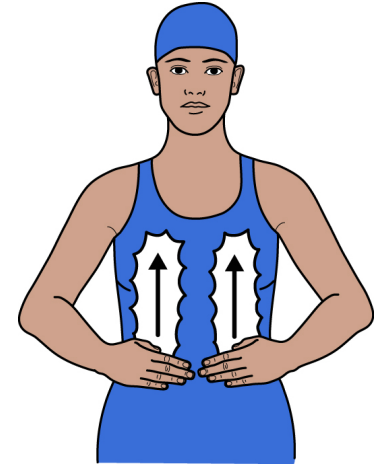
BOAT



Flat hands (palms in/back, pointing forward/in) with fingertips touching move forwards.



SWIMSUIT



Flat hands (palms back, pointing in) brush up body. May be preceded by 'swim' if necessary (Flat hands (palms together, pointing forward) circle out).

AT THE BEACH

ICE CREAM



Working full "O" hand (palm in, pointing forward) moves to mouth; mime licking ice cream.

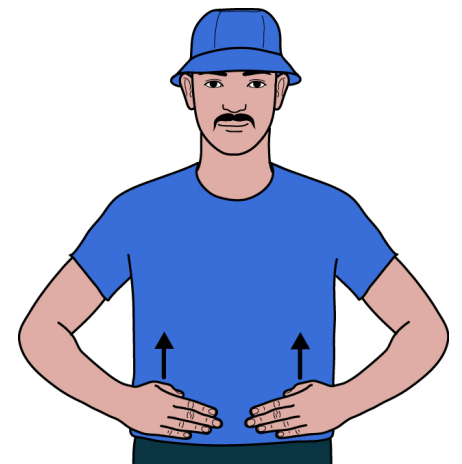


© SIGNALONG

www.signalong.org.uk

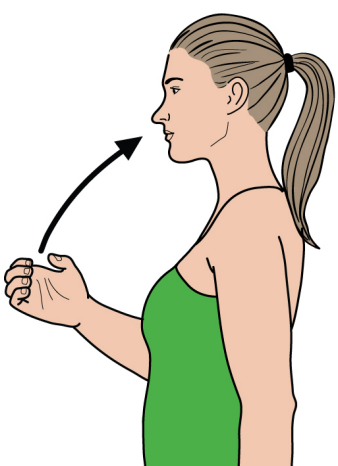
info@signalong.org.uk

SWIMMING TRUNKS



Flat hands (palms back, pointing in) make small upward movement at waist.

DRINK



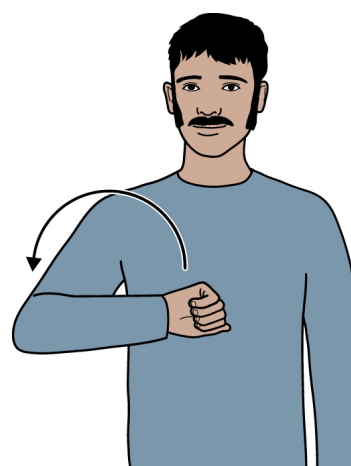
Working full "C" hand (palm in, pointing forward) moves up to mouth turning to point up.

FOOD



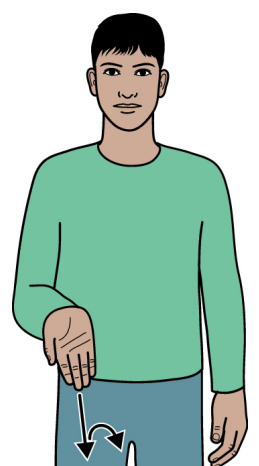
Fingertips of working bunched hand (palm back, pointing up) touch face at side of mouth.

BUCKET



Working, loosely closed hand (palm forward, pointing in) traces shape of bucket handle, finishing palm forward, pointing out.

SPADE



Working flat hand (palm forward/up, pointing forward/down) moves firmly forward/down and then turns to palm back/down, pointing forward/down.